

Temperature controlled packaging made simple

NanoCool Insulated Shippers

Extended Duration, Smaller and Lighter

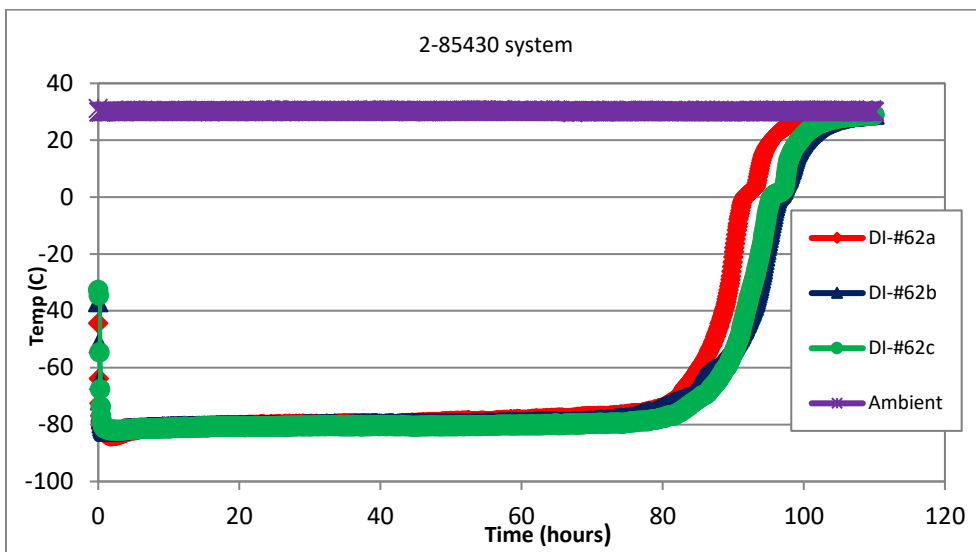


Ideal for shipping -20°C and -65°C products.

- Unique systems of advanced insulation with a tough barrier film and nanoporous core
- Long lasting (some sizes beyond 200 hours).
- Cuts freight costs.
- Uses less dry ice
- Requires less storage space.
- Environmentally friendly:
 - less CO₂ output
 - less waste.
- Reduced number of advanced insulation panels to increase cost effectiveness and reproducibility.
- Drop-tested under dry ice conditions.
- Inner corrugate liner for physical protection.
- Enhanced gasket to minimize H₂O ingress.

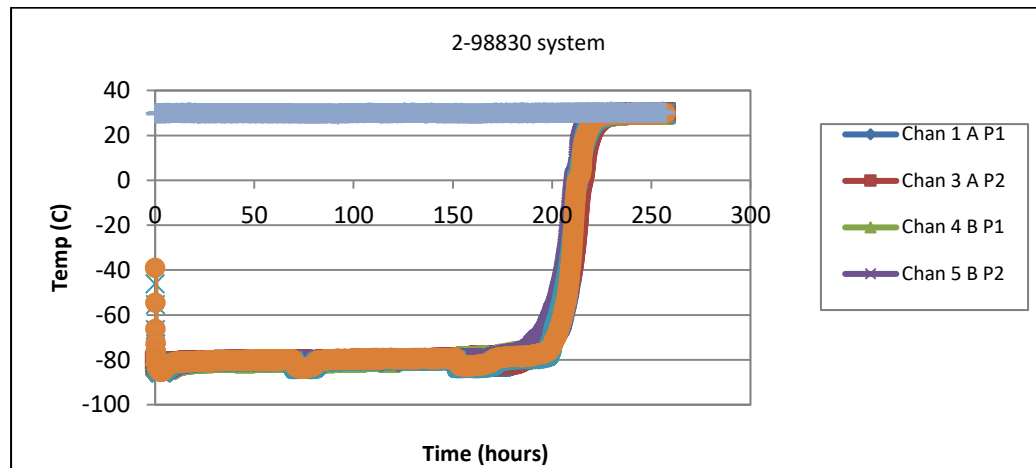
Examples of 4 and 6 Day Performance

Model #	Duration below -20°C (hours)	Dry ice (pounds)	Total Weight (pounds)	Payload Volume (liters)
2-98630	103	8	14	4
	134	12	18	2
2-98830	103	9	15	5.5
	134	12	19	3
2-1191030	94	12	22	10.5
	146	17	27	7



Triplicate 2-85430 product performance with a 30 °C constant ambient with 4.7 pounds of dry ice.

Triplicate 2-98830 product performance with a 30 °C constant ambient with 20 pounds of dry ice.



Product #	Weight empty (lbs.)	Payload (inches)	Payload (liters)	Maximum amount of dry ice (lbs.)	Maximum duration (hours)	Outer dimensions (inches)
2-85230	1.6	8.4 x 4.6 x 2.9	1.5	3	48	11.8 x 8.2 x 5.4
2-85430	2.8	8.5 x 4.6 x 4.3	3.2	5	92	11.3 x 7.8 x 7.5
2-98630	5.2	9.3 x 8.5 x 6.6	8.2	15	180	12.3 x 11.5 x 10
2-98830	5.7	9.3 x 8.5 x 7.9	10.4	20	210	12.3 x 11.5 x 11.7
2-119830	7.2	11.3 x 8.9 x 8.1	14.7	29	254	14.0 x 12.9 x 12.2
2-1191030	8.2	11.3 x 8.9 x 10.4	18.5	36	274	14.0 x 12.9 x 14.3
2-1191330	9.8	11.3 x 8.9 x 13.2	21.7	42	310	14.0 x 12.9 x 17.1

Vince Paolizzi Director Business Development
 484-716-9958
 vpaolizzi@nanocool.com
 www.nanocool.com
 Certified to ISO 9001-2008

NanoCool®
A Cool Revolution.

NanoCool is a registered trademark of NanoPore Incorporated.
 Protected by US Patent 6,559,096; 6,688,132; 6,968,711 and 6,701,724. Other patent applications pending. *Patents pending